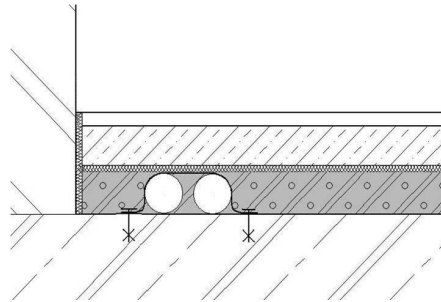


## SELECTION OF SIRCONTEC FLOOR COMPOSITIONS

Data Sheet No. 210

The most common composition for residential/civil and multifunctional buildings.  
For more detailed description see DS No. 212 (DS\_Floors)

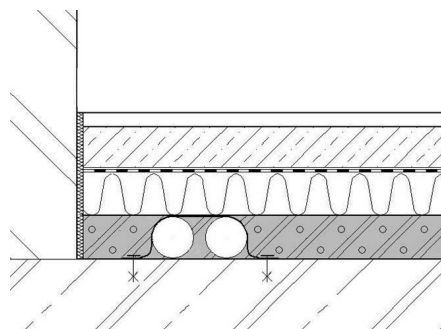


- wear layer—e.g. PVC, floating flooring, ceramic floor, carpet
- screed, self-levelling cast screed / cement, manual, 35-45 mm
- sound-insulating layer - EKM 10xx-, thickness min 6 mm
- levelling layer— foam concrete SIRCONTEC PBG 35-50
- conduit for water or electricity distribution, **not floor heating**
- bearing slab

Note: Floor layers must be separated from the masonry by elastic material with thickness min. 5 mm

Floor composition used mainly when constructing floor in a flat situated above unheated space.

For more detailed description see DS No. 213 (DS\_Floors)

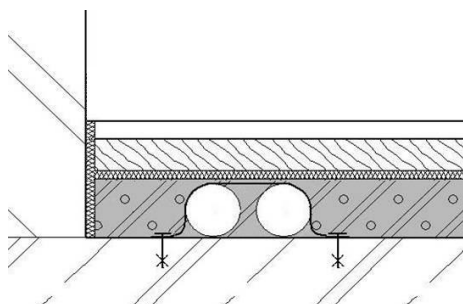


- wear layer—e.g. PVC, floating flooring, ceramic floor, carpet
- screed, self-levelling cast screed / cement, manual, 35-45 mm
- separating foil or paper
- thermal insulating layer— foam polystyrene or mineral wool
- levelling layer— foam concrete SIRCONTEC PBG 35-50
- conduit for water or electricity distribution, **not floor heating**
- bearing slab

Note: Floor layers must be separated from the masonry by elastic material with thickness min. 5 mm

Floor composition with spread layer constructed in a dry method, determined for less indented surfaces

For more detailed description see DS No. 214 (DS\_Floors)



- wear layer—e.g. PVC, floating flooring, ceramic floor, carpet
- construction wood chipboard OSB, thickness min. 15 mm
- sound insulating layer min. 5 mm—foam PE
- levelling layer— foam concrete SIRCONTEC PBG 35-50
- conduit for water or electricity distribution, **not floor heating**
- bearing slab

Note: Floor layers must be separated from the masonry by elastic material with thickness min. 5 mm

The thickness of the respective floors layers should be desing by persons authorised to do it.  
The values of noise damping for the SIRCONTEC floors and the mentioned Data Sheets can be found on [www.sircontec.com](http://www.sircontec.com)

Validity: from 01.08.2010